



# **Commodity Classic Grand Hyatt**

## **Sponsorship Specification & Pricing Guide**

# 2017

**San Antonio, TX**

# Artwork Deadlines & Guidelines

**\$10.25/sq ft for all cling material/column wraps**

**\$9.75/sq ft for all banners**

**Artwork Deadline: COB Jan 27<sup>th</sup> (1 Month before Install)**

**25% surcharge if received during week of 1/30 (3 weeks before install)**

**40% surcharge if received during week of 2/6 (2 weeks before install)**

**50% surcharge if received during week of 2/13 (1 week before install)**

**Paramount will send all graphics to Hotels/Convention Center for final approval before printing.**

## **Sending Files:**

**Please send all graphics as print ready PDF with NO BLEEDS.**

**Make sure all fonts are outlined and all images are linked/embedded.**

**If you send a file at something other than 100% please make a note of this when sending your files.**

**All files must be uploaded to Paramount Convention Services' FTP. You will be provided with login and password information when you are ready to upload.**

## **Special Notes:**

**\*\*Window Clings have such a variance in size and very large quantities for some of the window banks. We are requesting that you send a mock-up along with the print ready artwork. This will ensure that your graphics are laid out correctly on site.**

**\*\*Column Wraps are built using Paramount's metal system. All panels will tuck into the metal structure .25" on all edges. If you have graphics that span the vertical metal bars, please compensate for the gap of the bar (2").**

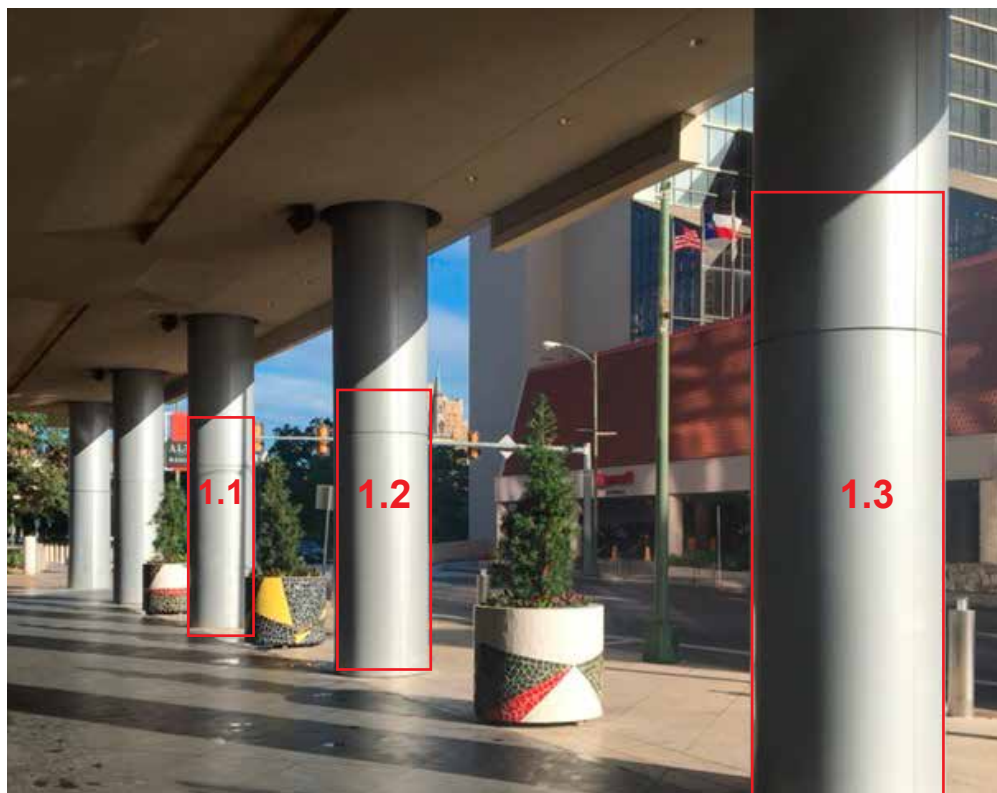
**If you have any other questions or concerns regarding graphics, contact Sean Hoffert at Paramount Convention Services.**

**314.621.6677 or [shoffert@paramountcs.com](mailto:shoffert@paramountcs.com)**



## Outside Front Entrance Columns

3 highlighted columns below.



**Dimensions: (W" x H")**

12' (x3)

A: 42.75" x 46.625" (x4)

B: 42.75" x 92.125" (x4)

*When designing graphics that span across multiple panels, please note that the black metal bars are 2" wide.*

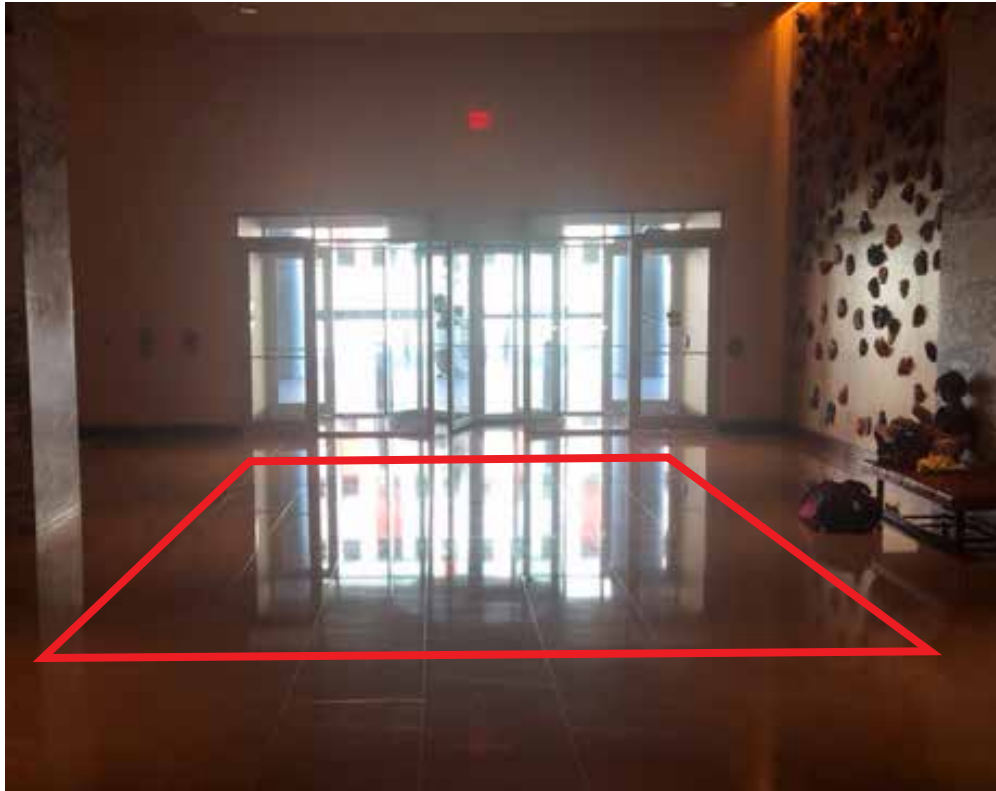
12'



(x3)

**Sponsorship:** \$8,000/ea    **Production & Installation:** \$10.25/ft<sup>2</sup>

## Main Entrance Floor Clings



**Dimensions: (W" x H")**

**24" x 24" (x3)**

*Clings will be placed in selected areas,  
no more than (3) 24" x 24"*

**Sponsorship: \$5,000**

**Production & Installation: \$10.25/ft<sup>2</sup>**

## Bar Rojo Side Entrance Floor Clings



**Dimensions: (W" x H")**

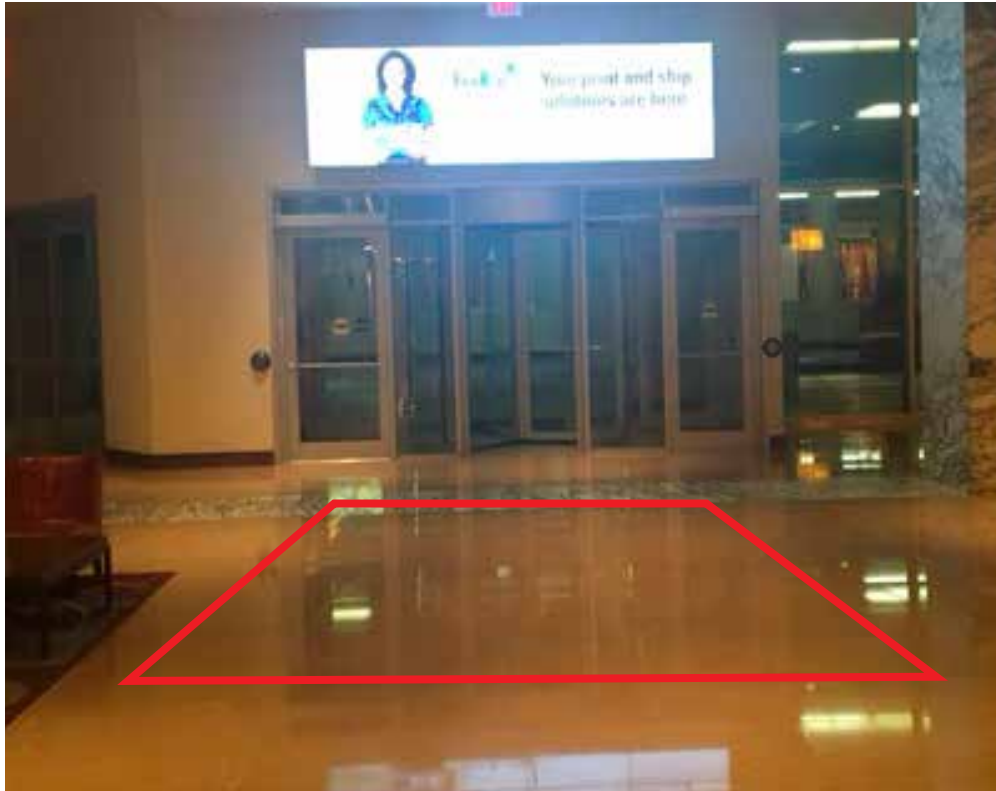
**24" x 24" (x3)**

*Clings will be placed in selected areas,  
no more than (3) 24" x 24"*

**Sponsorship: \$5,000**

**Production & Installation: \$10.25/ft<sup>2</sup>**

## Valet/Garage Side Entrance Floor Clings



**Dimensions: (W" x H")**

**24" x 24" (x3)**

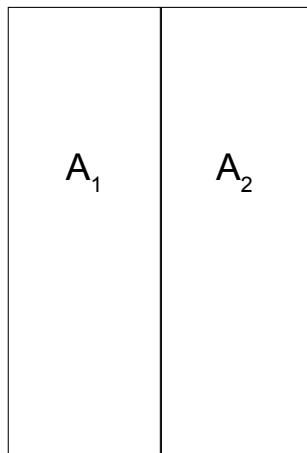
*Clings will be placed in selected areas,  
no more than (3) 24" x 24"*

**Sponsorship: \$5,000**

**Production & Installation: \$10.25/ft<sup>2</sup>**



## Elevator Doors Inside and Outside Lobby, 2<sup>nd</sup>, & 4<sup>th</sup> floors



### Dimensions: (W" x H")

A: 20.75" x 83.5"

*Each door is divided into a right and left door. Each 1/2 door is 20.75" wide. Graphics that are sent as one piece at 41.5" wide will be split down the middle during production.*

**Sponsorship: Package 1-** \$15,000/\$20,000  
15 Elevators

**Package 2-** \$13,000/\$17,000  
12 Elevators

*\*\*Higher price includes inside of doors as well*

**Production & Installation:** \$10.25/ft<sup>2</sup>

**BANK 1** has 6 elevators that go to floors 1-19

**BANK 2** has 3 elevators that go to floors 1-5 & 20-24

9 elevators on each lobby, 2nd and 4th floors, for a total of 27 elevators. Sponsor 5.1 will get 5 elevators per floor. Sponsor 5.2 will get 4 elevators per floor

**\*\*FLOOR CLINGS** – Each sponsor will also have the option of placing a 24" x 24" floor cling in front of each elevator that is purchased for that sponsor

**Floor Cling:** \$600/ea

## Registration Clings on Front of Counters



**Dimensions: (W" x H")**

105.75" x 37.5" (x2)

*Graphics placed on wood paneling in front of hotel registration counters.*

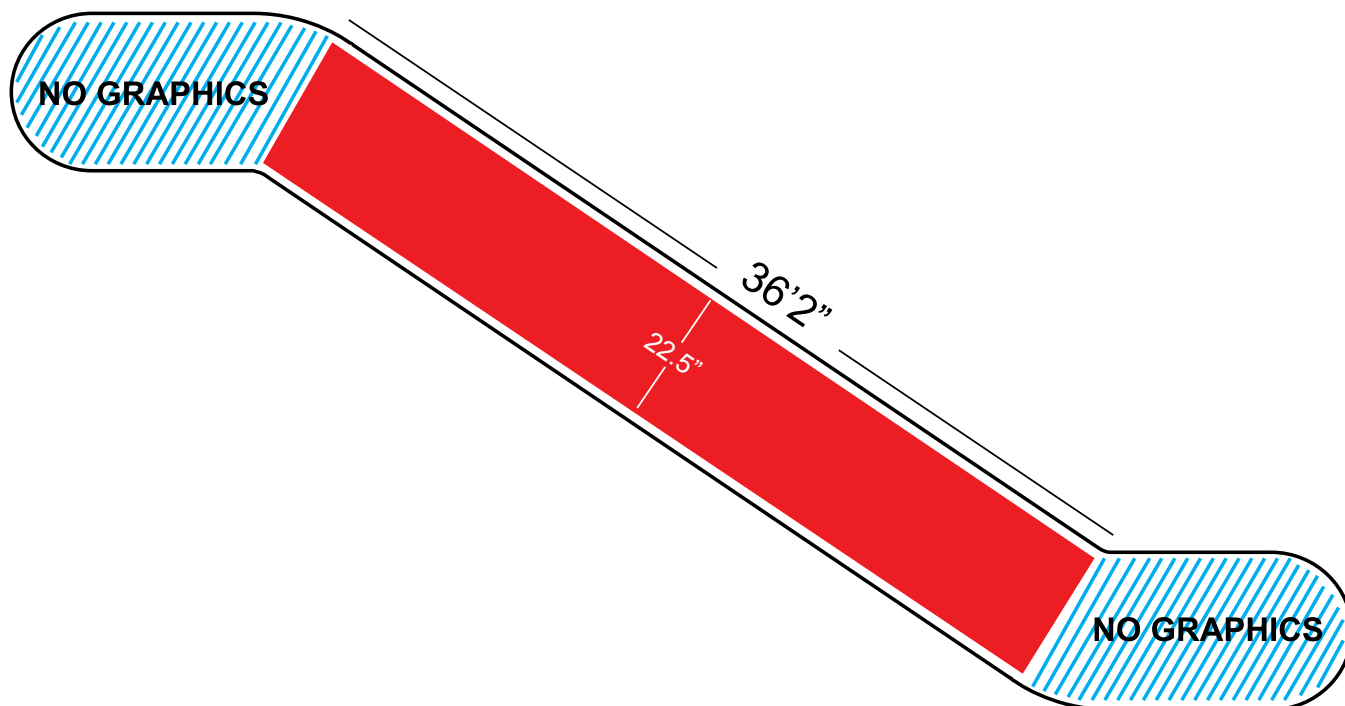
*\*\*2 locations available*

**Sponsorship:** \$7,500/ea

**Production & Installation:** \$10.25/ft<sup>2</sup>



## Escalator by Bar Rojo Leading Down to Ruth's Chris



**Dimensions: (W" x H")**

Glass Sides: 36'2" x 22.5" (x4)

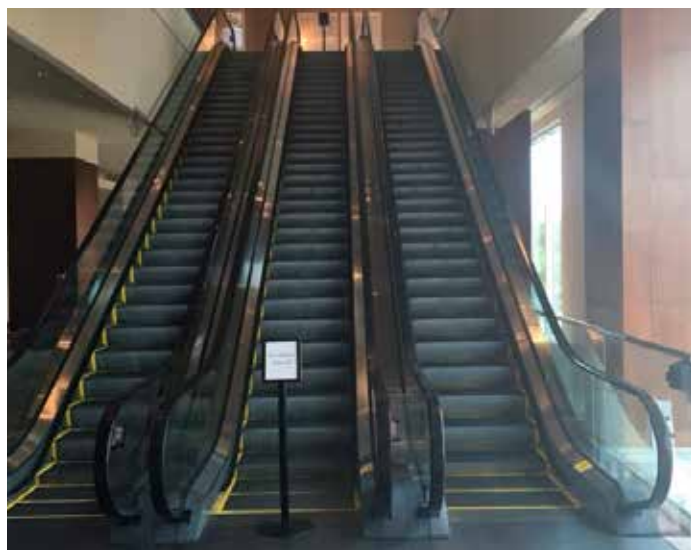
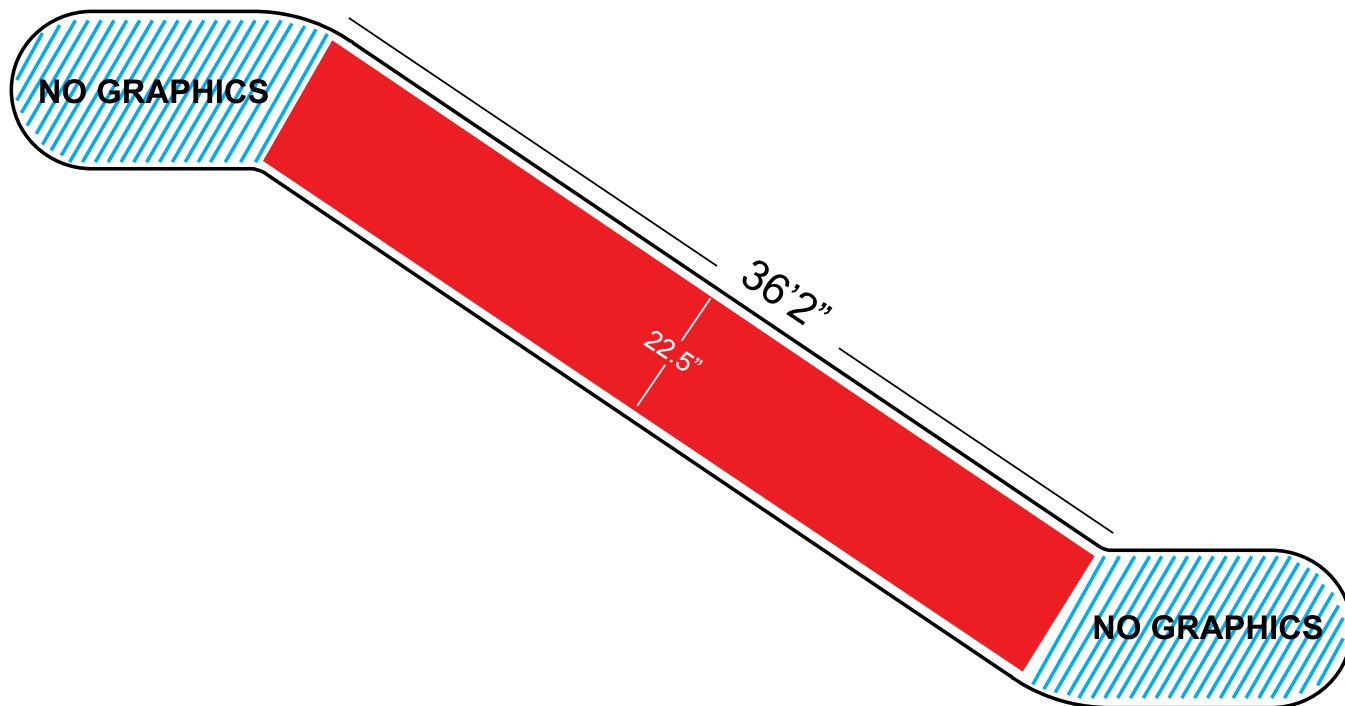
Flat Metal Divider: 11" x 45' (x1)

*4 clings on inside glass of escalators*

**Sponsorship:** \$5,000

**Production & Installation:** \$10.25/ft<sup>2</sup>

## Escalator from 2<sup>nd</sup> to 3<sup>rd</sup> Floor



**Dimensions: (W" x H")**

Glass Sides: 36'2" x 22.5" (x6)

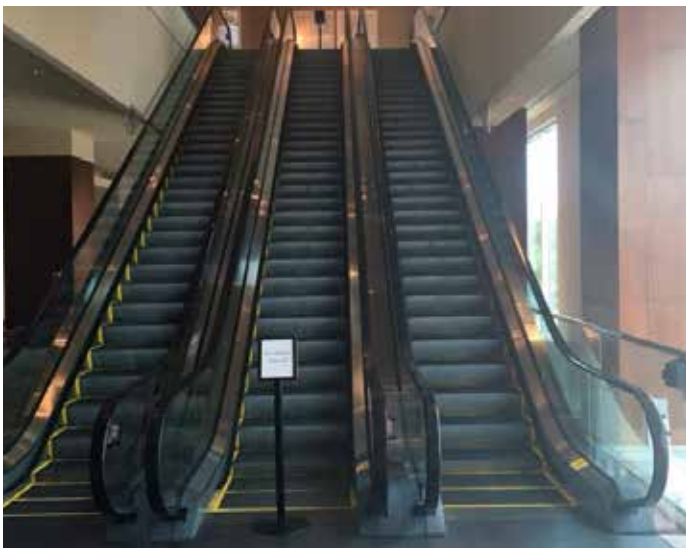
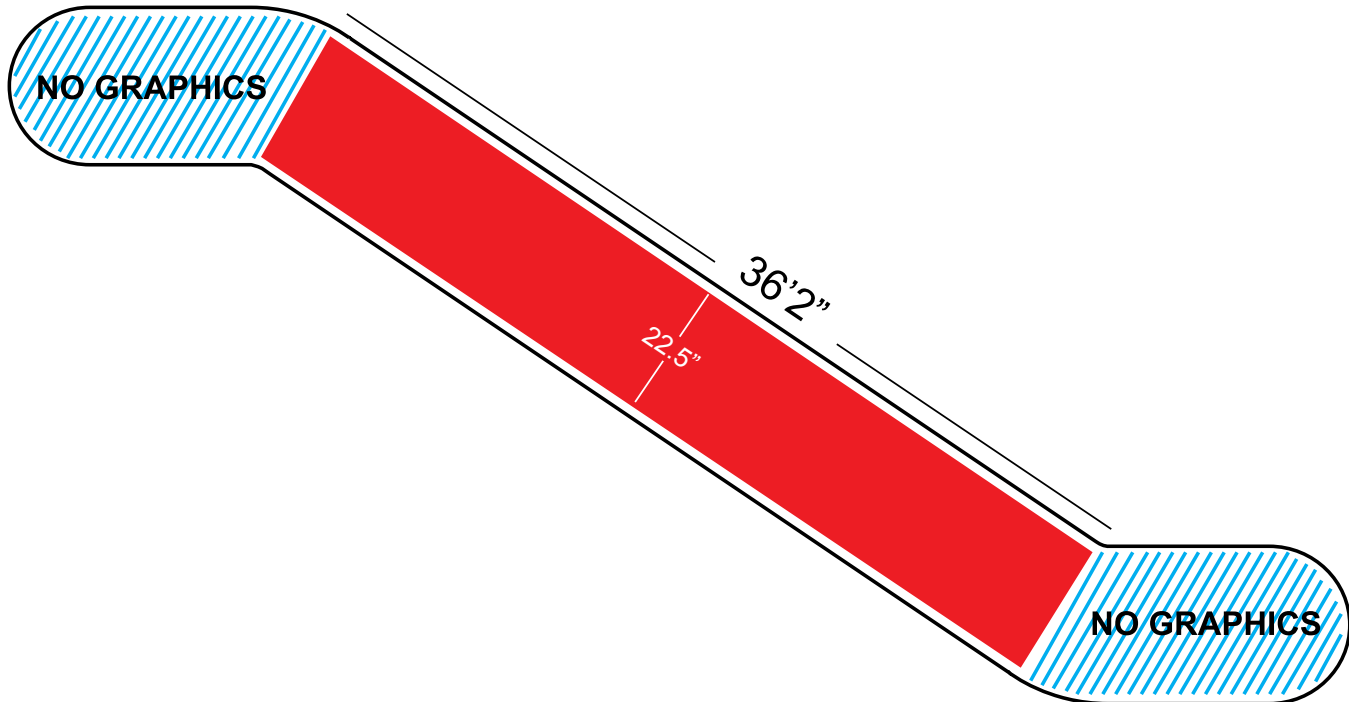
Flat Metal Divider: 11" x 45' (x2)

*6 clings on inside glass of escalators*

**Sponsorship:** \$5,000

**Production & Installation:** \$10.25/ft<sup>2</sup>

## Escalator from 3<sup>rd</sup> to 4<sup>th</sup> Floor



**Dimensions: (W" x H")**

Glass Sides: 36'2" x 22.5" (x6)

Flat Metal Divider: 11" x 45' (x2)

*6 clings on inside glass of escalators*

**Sponsorship:** \$5,000

**Production & Installation:** \$10.25/ft<sup>2</sup>

## Banners on Black Balcony Windows Above Rojo



**Dimensions: (W" x H")**

113' x 68" (x2)

*Single sided banner to hang in front of dark glass off 2nd and 3rd floor balconies.*

**Sponsorship:** \$15,000/ea

**Production & Installation:** \$9.75/ft<sup>2</sup>